

# Spring Time!!

*investigative project play bundle*



**Project PLAY Pack - Toddlers, Preschoolers + Early Schoolers**

# Spring Time

project play pack – toddlers, preschoolers and early schoolers

Take on the role of a florist in a flower shop, to a scientist creating nature soups, a detective on a Spring nature bug hunt, to the creator of a flower craft and discover the world around you with an investigative question to research. This pack is part of a growing bundle of Project PLAY Packs. I created this resource for the members of the celebratePLAY community as a tool to support them with daily PLAY in their homes.

In this resource you will find:

- 1 x Dramatic PLAY Idea
- 1 x Sensory PLAY Idea
- 1 x Science PLAY Idea
- 1 x Craft PLAY Idea
- A series of printable resources from walls that teach displays (word cards) to table learning resources.
  - A weekly PLAY Planner to plan out the week using these resources.

Our PLAY ideas in this pack are nothing new, they are a series of simple and fun projects to work on over an extended period of time. Learners will apply knowledge and understanding by investigating an engaging and meaningful question .

I hope this resource is helpful when boosting daily play and has your little one's eyes sparkle with joy .

*erin xx*

**All PLAY activities shared by celebratePLAY require adult supervision at all times.**



# Spring Time

project play pack – toddlers, preschoolers and  
early schoolers

*about erin*

Hi there!! I'm Erin, teacher (EC and Primary), Mum (of 2), wife, smoothie obsessed, organisational nerd and soon to be your greatest PLAYmate...the one that will share:

- play ideas with you
- the one that will support you in creating play systems and play spaces that fit YOUR life
- the playmate that will celebrate the PLAY wins with YOU and
- the one that will empower YOU to totally rock this motherhood PLAY gig thing - it's a REAL \*thing\*<sup>♥</sup>.

*play notes*

Thank you for becoming our newest PLAYmate by purchasing this product.

This Project PLAY Pack is for personal use only and is not to be sold, shared, redistributed in any form. If you love this pack as much as we do and would like your family and friends to have their own copy, please refer them to our website [www.celebrateplay.com.au](http://www.celebrateplay.com.au)

## Follow us on the socials

*facebook* - [www.facebook.com/groups/celebrateplay](http://www.facebook.com/groups/celebrateplay) and [www.facebook.com/groups/projectplay](http://www.facebook.com/groups/projectplay)

*instagram* - [www.instagram.com/celebrate\\_play](http://www.instagram.com/celebrate_play)

*website* - [www.celebrateplay.com.au](http://www.celebrateplay.com.au)

*shop* - [www.celebrateplay.com.au/shop](http://www.celebrateplay.com.au/shop)

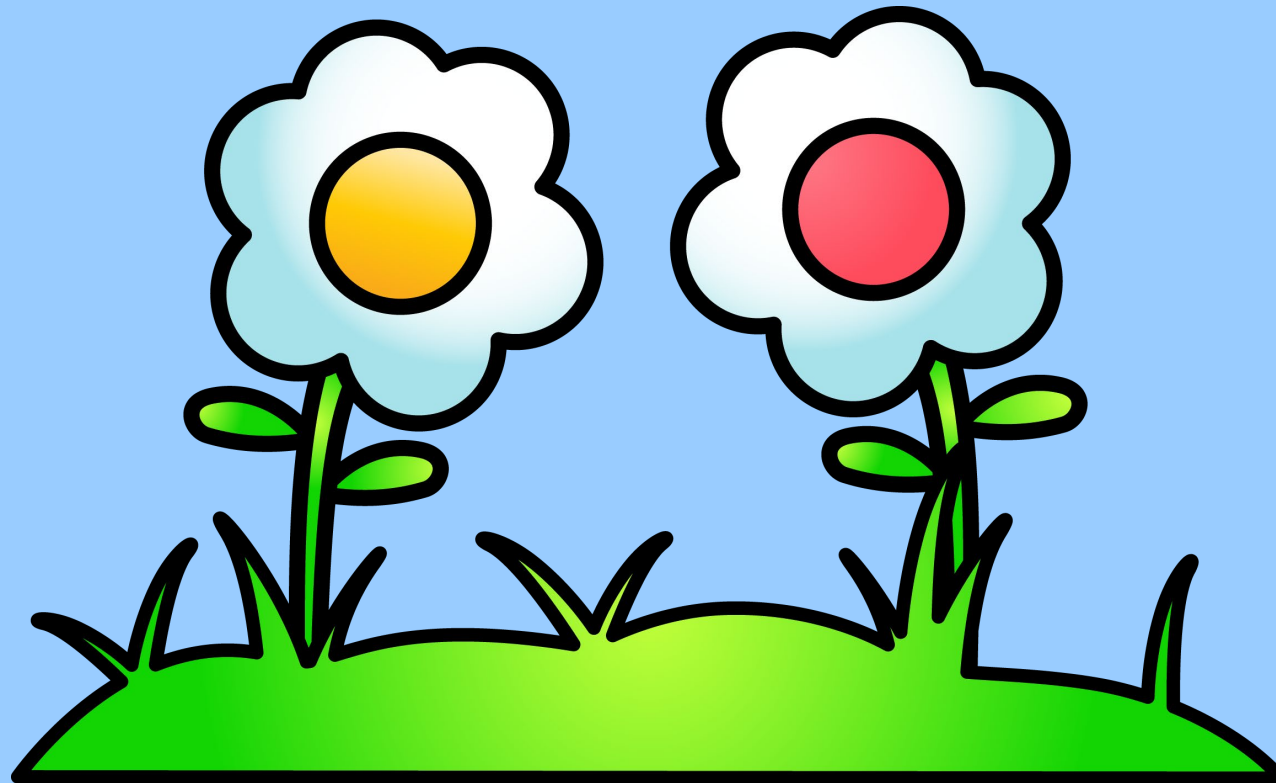
Happy *play*ing!!



# Spring Time Investigative Question

project play pack – toddlers, preschoolers and  
early schoolers

How can I explore the Spring season through PLAY?



FLO

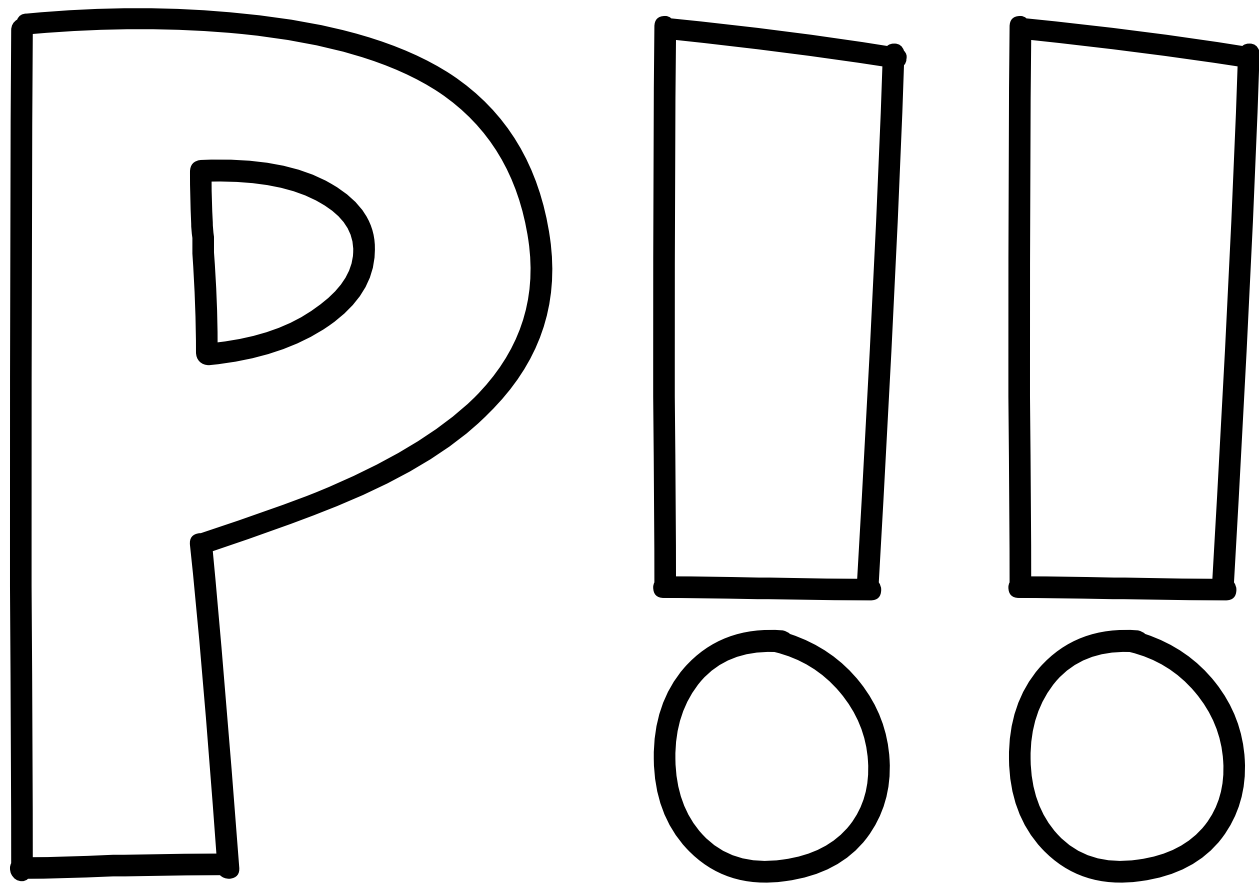
Print on coloured cardstock to create your very own coloured letters to use as a banner.

W E R

Print on coloured cardstock to create your very own coloured letters to use as a banner.

SHO

Print on coloured cardstock to create your very own coloured letters to use as a banner.



Print on coloured cardstock to create your very own coloured letters to use as a banner.



Spring



celebratePLAY

bugs



celebratePLAY

sun



celebratePLAY

baby animals



celebratePLAY

flowers



celebratePLAY

season

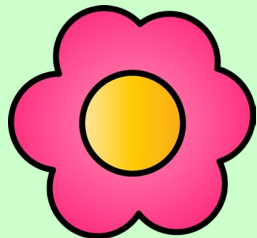


celebratePLAY

## Spring Time Word Cards

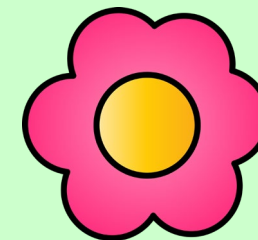
Print on paper and laminate for durability to create your very own card set.

Flower Shop



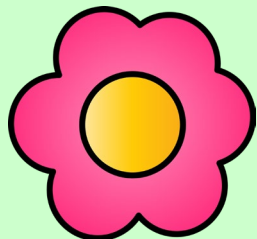
celebratePLAY

bouquet



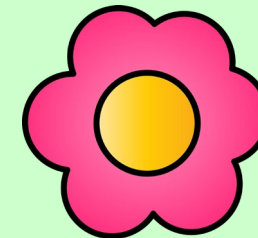
celebratePLAY

florist



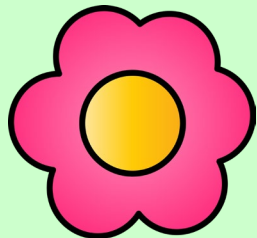
celebratePLAY

petals



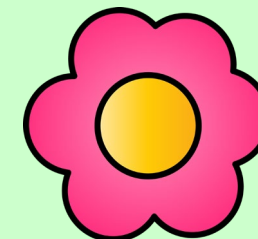
celebratePLAY

insects



celebratePLAY

leaves



celebratePLAY

**Spring Time Word Cards**

Print on paper and laminate for durability to create your very own card set.

messy



celebratePLAY

warm



celebratePLAY

bugs



celebratePLAY

cold



celebratePLAY

wet



celebratePLAY

mix

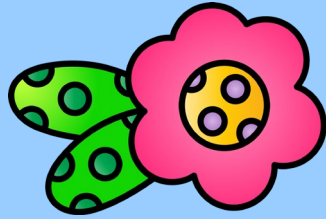


celebratePLAY

## Spring Time Word Cards

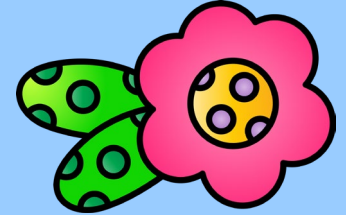
Print on paper and laminate for durability to create your very own card set.

craft



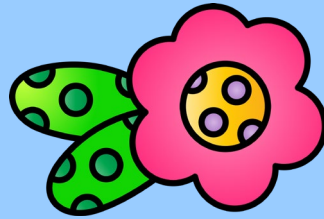
celebratePLAY

stick



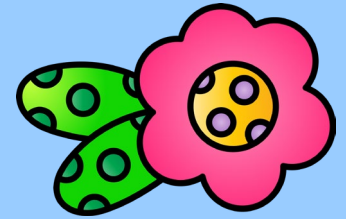
celebratePLAY

glue



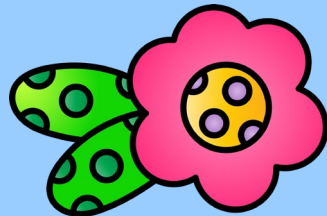
celebratePLAY

scrunch



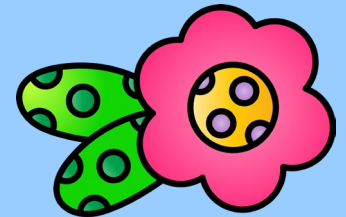
celebratePLAY

scissors



celebratePLAY

creator



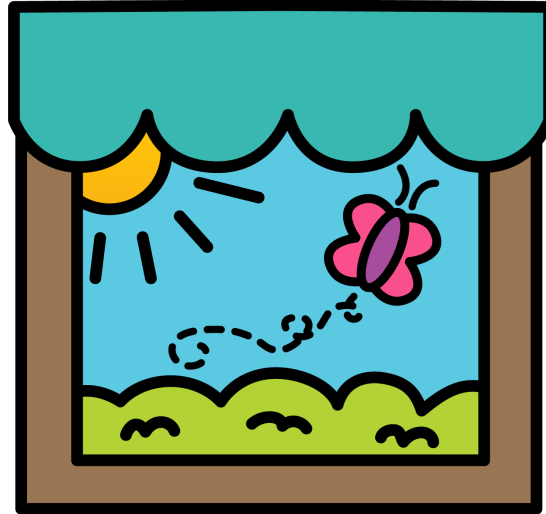
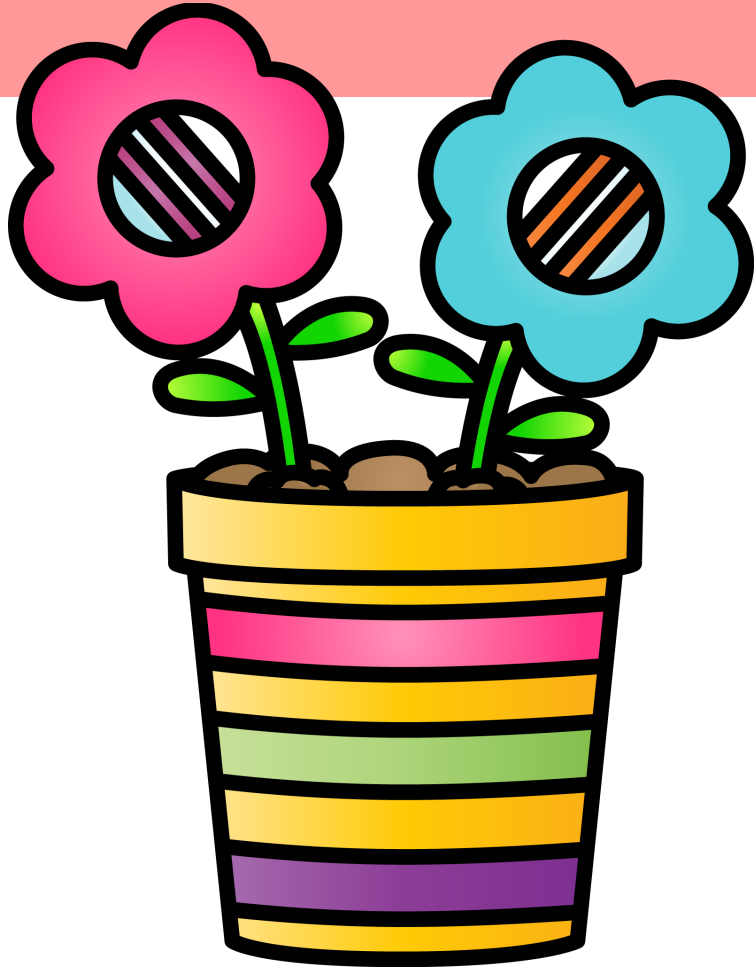
celebratePLAY

## Spring Time Word Cards

Print on paper and laminate for durability to create your very own card set.

# Spring Time #1

## Dramatic PLAY



- You will need:
- Flower Shop Banner
  - Dramatic Play props (eg, tissue flowers – see slide below for step-by-step instructions, vase idea and flower shop cards).
- You can use your own flowers too.
- Table and chairs

### METHOD

1. Design a flower shop using the suggested materials above.
2. Print and make the dramatic play prop using the printables below.
3. Set up a Flower Shop for play. Place prop printables in the Flower Shop.
4. Engage in pretend play, pretending to make bouquets, take flower orders and serve customers in the shop.

**Adult Supervision is required at all times.**

# Tissue Flowers

## Instructions

You will need:

- 3 x tissues
- Floral Tape
- Floral Wire
  - Scissors
- Coloured marker

### METHOD

1. Lay three tissues on top of each other with the fold facing the same orientation.
2. Concertina the tissues to the end so they make a long rectangle shape.
3. Secure the tissues in the middle tightly and lengthwise using the floral wire. The floral wire will make the stem. Wrap excess wire from around the tissues the wrong stem. Don't worry if the wire is not in the centre.
4. Cut each end of the tissue to ensure the wire is now in the centre.
5. Flick the edges so the layers separate slightly.
6. Colour the edges of each end of the tissues with a marker.
7. Wrap floral tape tightly around the wire with a few extra layers around the upper stem to cover the excess wire.

### METHOD continued

8. Separate each layer of tissue on both sides of wire. You may need to mould them into a round ball shape to replicate a flower.

NOTE – If you notice the tissues haven't quite met in the centre to cover wire/stem join, it may be due to the wire not wrapped tight enough around the tissue in Step 3.

If you notice the flower is fuller on one side than the other, it may be due to orientation not the same direction for each tissue or the wire is not centred around tissue after cutting the ends.

OPTIONAL – use cardboard cylinders for vases. Decorate the vases with markers or wrapping paper.

**Adult Supervision is required at all times.**



**Daisies**

**Roses**

**Pansies**

**Sunflowers**

**Gerberas**

**Hydrangeas**

**Tulips**

**Chrysanthemums**

PASTEL FLOWER CARDS  
Print and cut Flower  
Cards and add to the  
Flower Shop

**Daisies**

**Roses**

**Pansies**

**Sunflowers**

**Gerberas**

**Hydrangeas**

**Tulips**

**Chrysanthemums**

B + W FLOWER CARDS  
Print and cut Flower  
Cards and add to the  
Flower Shop



# Spring Time #2

## Sensory PLAY Idea

You will need:

- Petals, seed pods, grass and leaves
  - Water
  - Tongs

OPTIONAL – Mud or DIY taste safe mud (oobleck)

- Containers, bowls and spoons.

(Ensure these materials are safe for your little ones).

### METHOD

1. Set up ingredients on a flat surface in an aesthetic way eg, bundled by similarities in an entertainer's tray or a baking tray or series of bowls with tongs.
2. Use tongs to select natural materials.
3. Place materials in a container or bowl and mix.

Refer to the investigation question – How can I explore the Spring season through PLAY?

**Adult Supervision is required at all times.**



# Spring Time #3

## Science PLAY Idea



You will need

- Magnifying Glass (real or pretend)
- Nature Hunt Task Card (below)

### METHOD

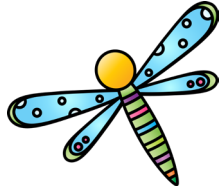
1. Print the Nature Hunt Task printable (laminates for durability and repeat use).
2. Head outdoors with the task card.
3. Look at each item/living thing carefully on the task card, naming it and asking can you see the ...?
4. 3. Record answers on the task card.
5. Take photos of the nature hunt and findings and place in the Flower Shop.

Refer to the investigation question – How can I explore the Spring season through PLAY?

**Adult Supervision is required at all times.**

# Spring Time #3

## Nature Hunt Task Card





# Spring Time #4

## Craft PLAY

You will need:

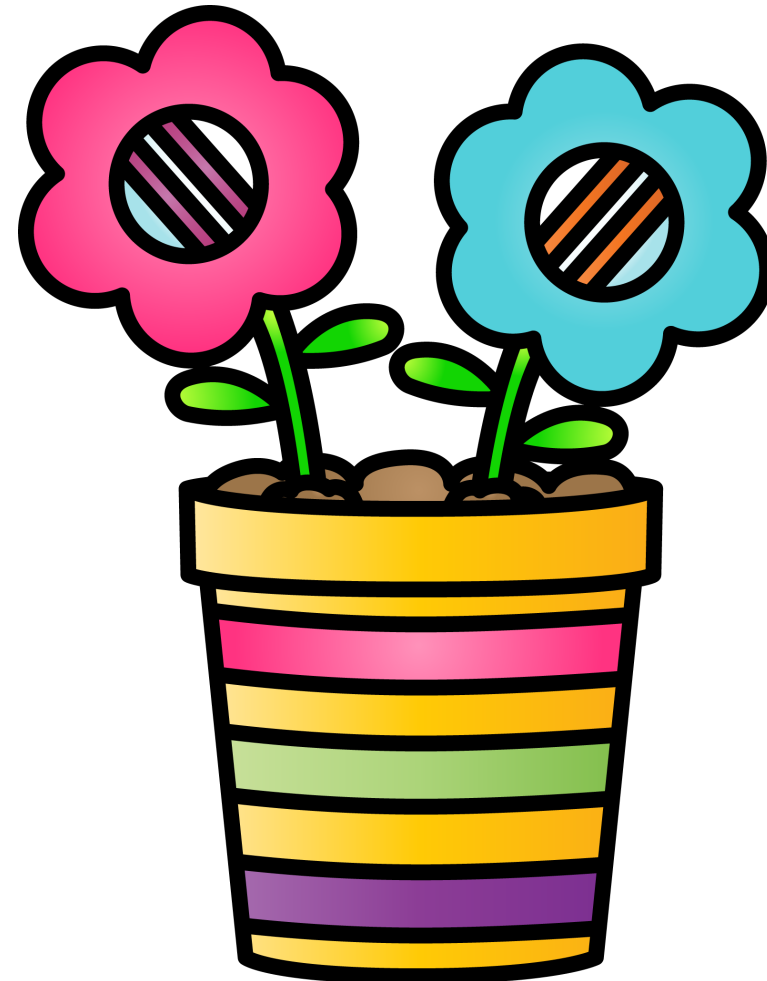
- Flower Template (next slide)
  - Stickers
- Collage pieces (cut up crepe paper squares)
  - Glue
  - Scissors

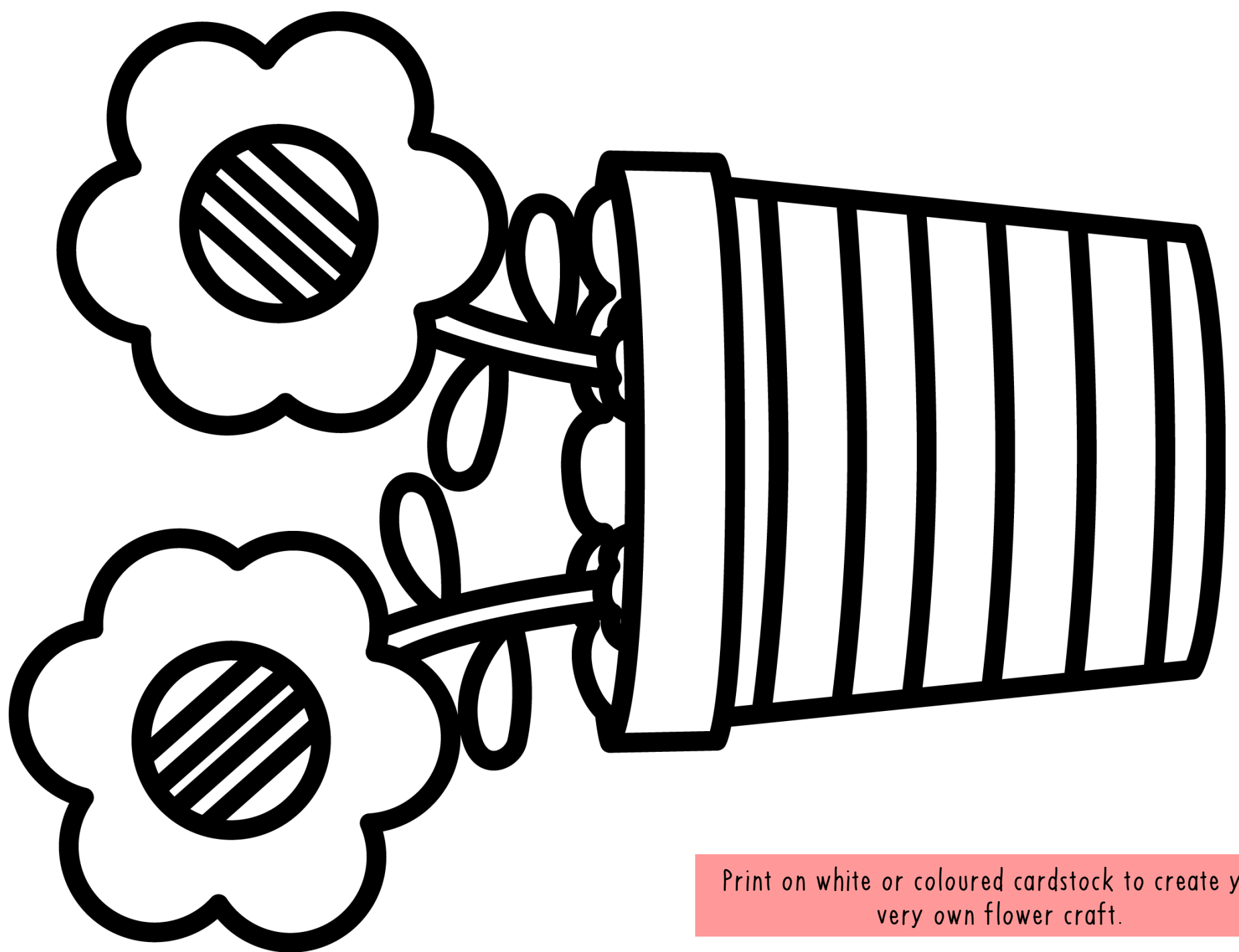
### METHOD

1. Print the flower template.
2. Scrunch up the crepe paper squares and cover the flower with collage pieces
3. Let it dry when complete
4. Enjoy and take photos to hang up in the Flower Shop.

Refer to the investigation question – How can I explore the Spring season through PLAY?

**Adult Supervision is required at all times**





Print on white or coloured cardstock to create your very own flower craft.

# Spring Time Investigative Question

project play pack - toddlers and preschoolers

## How can I explore Spring through PLAY?

Write and/or draw how you explored Spring play in your home.



# Weekly PLAY Planner



Monday	Tuesday	Wednesday	Thursday	Friday	Saturday	Sunday
Morning	Morning	Morning	Morning	Morning	Morning	Morning
Afternoon	Afternoon	Afternoon	Afternoon	Afternoon	Afternoon	Afternoon
Evening	Evening	Evening	Evening	Evening	Evening	Evening

Plan ahead and schedule block in Spring Time PLAY this month.

# Spring Time

thank you to the following artists

Graphics and Fonts used: Whimsy Clips, *pb skinnymocha*, KG Blank Space Sketch and JR Skinny Pete



*erin xx*

**All PLAY activities shared by celebratePLAY & Project PLAY require adult supervision at all times.**