



# Halloween Time!!

*investigative project play bundle*



**Project PLAY Pack - Toddlers, Preschoolers +  
Early Schoolers**

# Halloween Time

*project play pack – toddlers, preschoolers and early schoolers*

Take on the role of a witchy shop owner in a potion shop (pretend play), to a crafty witch making wands for nature potion hunts, to an artist creating monster collage, to a witch experimenting with scooping + pouring for a new potion all whilst discovering the world around you with an investigative question to research. This pack is part of a growing bundle of Project PLAY Packs. I created this resource for the members of the celebratePLAY community as a tool to support them with daily PLAY in their homes.

In this resource you will find:

- 1 x Dramatic PLAY Idea
  - 1 x Art Idea
  - 2 x Craft Ideas
  - 1 x Sensory PLAY Idea
- A series of printable resources from walls that teach displays (word cards) to table learning resources.
  - A weekly PLAY Planner to plan out the week using these resources.

Our PLAY ideas in this pack are nothing new, they are a series of simple and fun projects to work on over an extended period of time. Learners will apply knowledge and understanding by investigating an engaging and meaningful question .

I hope this resource is helpful when boosting daily play and has your little one's eyes sparkle with joy.

*love xx*

**All PLAY activities shared by celebratePLAY require adult supervision at all times.**



# Halloween Time

project play pack – toddlers, preschoolers and  
early schoolers

*about, le in,*

Hi there!! I'm Erin, teacher (EC and Primary), Mum (of 2), wife, smoothie obsessed, organisational nerd and soon to be your greatest PLAYmate...the one that will share:

- play ideas with you
- the one that will support you in creating play systems and play spaces that fit YOUR life
- the playmate that will celebrate the PLAY wins with YOU and
- the one that will empower YOU to totally rock this motherhood PLAY gig thing - it's a REAL \*thing\*♡.

*play notes*

Thank you for becoming our newest PLAYmate by purchasing this product.

This Project PLAY Pack is for personal use only and is not to be sold, shared, redistributed in any form. If you love this pack as much as we do and would like your family and friends to have their own copy, please refer them to our website [www.celebrateplay.com.au](http://www.celebrateplay.com.au)

## Follow us on the socials

*facebook* - [www.facebook.com/groups/celebrateplay](http://www.facebook.com/groups/celebrateplay) and [www.facebook.com/groups/projectplay](http://www.facebook.com/groups/projectplay)

*instagram* - [www.instagram.com/celebrate\\_play](http://www.instagram.com/celebrate_play)

*website* - [www.celebrateplay.com.au](http://www.celebrateplay.com.au)

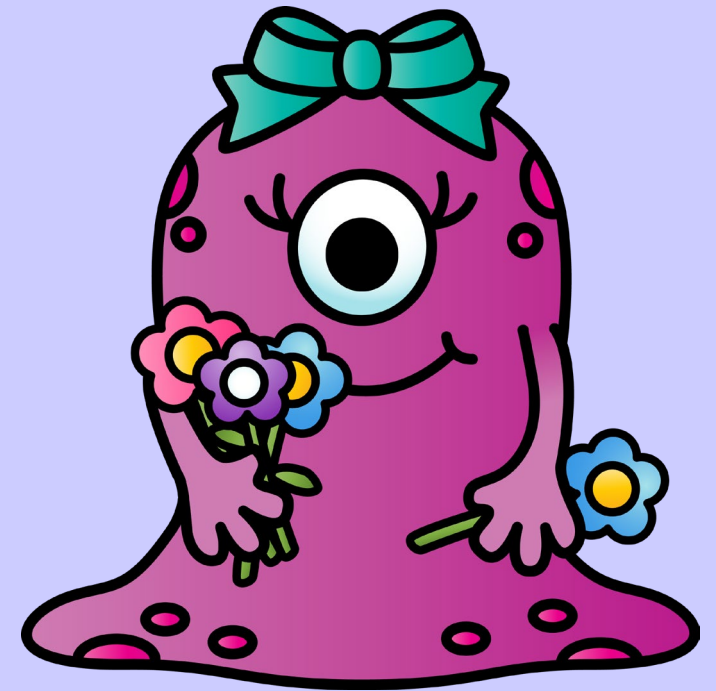
*shop* - [www.celebrateplay.com.au/shop](http://www.celebrateplay.com.au/shop)

Happy *play*ing!!

# Halloween Time Investigative Question

*project play pack – toddlers, preschoolers and  
early schoolers*

How can I explore Halloween through PLAY?



POT

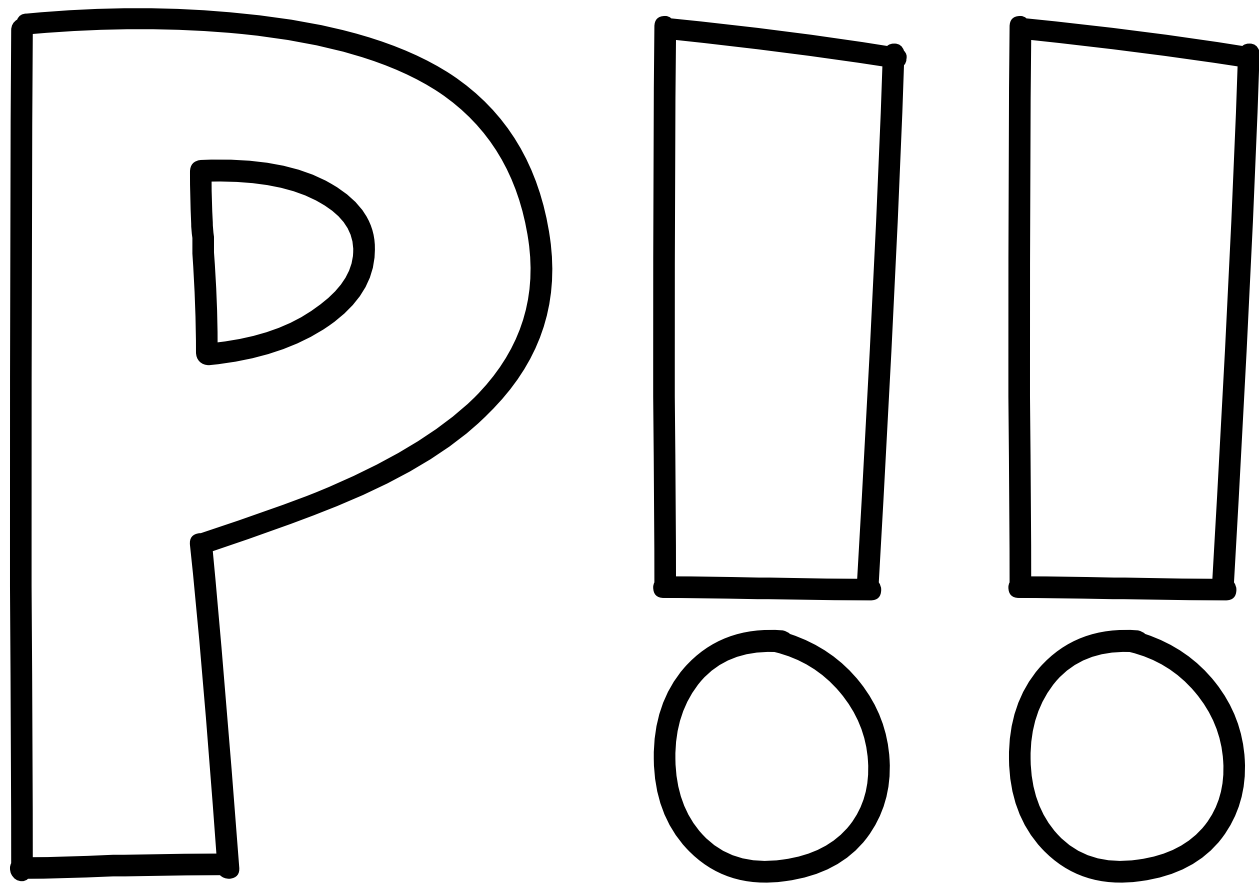
Print on coloured cardstock to create your very own coloured letters to use as a banner.

NON

Print on coloured cardstock to create your very own coloured letters to use as a banner.

SHO

Print on coloured cardstock to create your very own coloured letters to use as a banner.



Print on coloured cardstock to create your very own coloured letters to use as a banner.



Potion Shop



celebratePLAY

cauldron



celebratePLAY

witch



celebratePLAY

brew



celebratePLAY

broom



celebratePLAY

potion



celebratePLAY

**Halloween Time Word Cards**

Print on paper and laminate for durability to create your very own card set.

Potion Shop

celebratePLAY

cauldron

celebratePLAY

witch

celebratePLAY

brew

celebratePLAY

broom

celebratePLAY

potion

celebratePLAY

**Halloween Time Word Cards**

Print on paper and laminate for durability to create your very own card set.

paddlepop sticks



celebratePLAY

contact



celebratePLAY

tape



celebratePLAY

wand



celebratePLAY

star



celebratePLAY

magic



celebratePLAY

## Halloween Time Word Cards

Print on paper and laminate for durability to create your very own card set.

paddlepop sticks



celebratePLAY

contact



celebratePLAY

tape



celebratePLAY

wand



celebratePLAY

star



celebratePLAY

magic



celebratePLAY

## Halloween Time Word Cards

Print on paper and laminate for durability to create your very own card set.

paddlepop sticks

celebratePLAY

contact

celebratePLAY

tape

celebratePLAY

wand

celebratePLAY

star

celebratePLAY

magic

celebratePLAY

**Halloween Time Word Cards**

Print on paper and laminate for durability to create your very own card set.

crepe paper



celebratePLAY

cover



celebratePLAY

scrunch



celebratePLAY

monster



celebratePLAY

ball



celebratePLAY

craft



celebratePLAY

**Halloween Time Word Cards**

Print on paper and laminate for durability to create your very own card set.

crepe paper



celebratePLAY

cover



celebratePLAY

scrunch



celebratePLAY

monster



celebratePLAY

ball



celebratePLAY

craft



celebratePLAY

## Halloween Time Word Cards

Print on paper and laminate for durability to create your very own card set.

crepe paper

celebratePLAY

cover

celebratePLAY

scrunch

celebratePLAY

monster

celebratePLAY

ball

celebratePLAY

craft

celebratePLAY

**Halloween Time Word Cards**

Print on paper and laminate for durability to create your very own card set.



scoop



celebratePLAY

lift



celebratePLAY

pour



celebratePLAY

spill



celebratePLAY

rice



celebratePLAY

transfer



celebratePLAY

## Halloween Time Word Cards

Print on paper and laminate for durability to create your very own card set.

scoop



celebratePLAY

lift



celebratePLAY

pour



celebratePLAY

spill



celebratePLAY

rice



celebratePLAY

transfer



celebratePLAY

## Halloween Time Word Cards

Print on paper and laminate for durability to create your very own card set.

scoop

celebratePLAY

lift

celebratePLAY

pour

celebratePLAY

spill

celebratePLAY

rice

celebratePLAY

transfer

celebratePLAY

## Halloween Time Word Cards

Print on paper and laminate for durability to create your very own card set.

# Halloween Time #1

## Dramatic PLAY



You will need:

- Potion Shop Banner
- Dramatic Play props (eg. potion containers - sensory bottles (water, eco glitter, sequins, bubbly water) would be great for display only items, witches' hat and costume, use printable labels below to add to empty containers).
- Toy Kitchen or market shop front
  - Soft Toys
- Books (pretend potion recipes)
  - Table and chairs

### METHOD

1. Design a Potion Shop using the suggested materials above.
2. Print and make the dramatic play prop using the labels below.
3. Set up a Potion Shop for play. Place prop printables on the table or market/shop front and table.
4. Engage in pretend play, pretending to serve customers (soft toy crowd) and shake and mix potions in sensory bottles.

**Adult Supervision is required at all times.**

Kindness	Fun	Happiness	Joy
Pink	Blue	Green	Yellow

Print on paper and laminate for durability to create your very own potion bottle label set.

# Halloween Time #2

## Art Idea

You will need:

- Monster Template (see below)
  - Crepe Paper Balls
    - Glue
  - Table and Chairs

• METHOD (together or Invitation to PLAY)

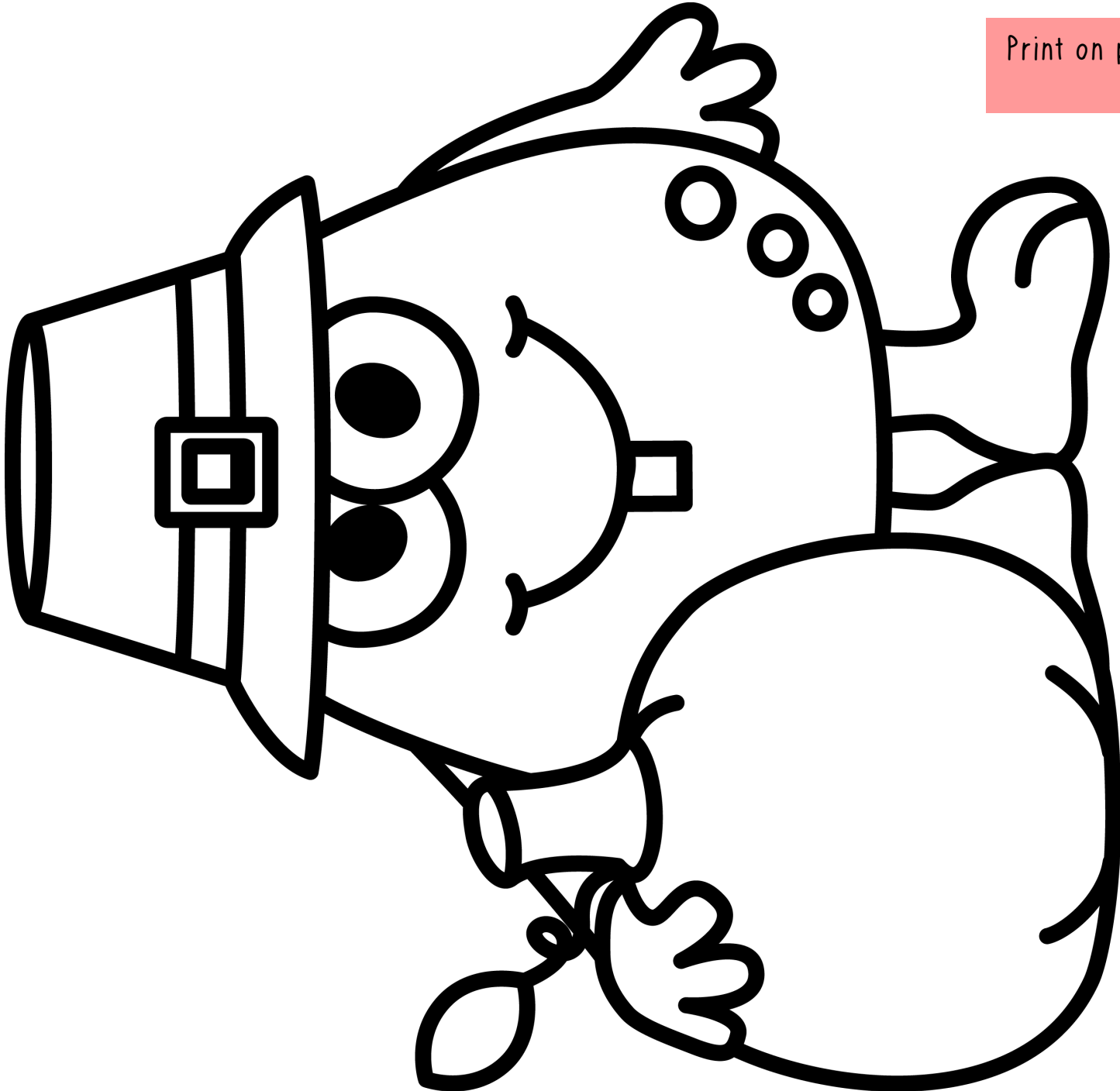
1. Set up art supplies as an invitation to PLAY (eg. crepe paper balls on a flat tray or bowls colour sorted and place within reach of child.
2. Place monster template on table in front of chair with a glue stick or liquid glue with a brush next to monster template.
3. Glue crepe paper balls and cover the monster template.
  4. Leave monster art to dry
  5. Once dry, hang up in the potion shop
6. Refer to the investigation question – How can I explore Halloween through PLAY?

OPTIONAL – Make some crepe paper balls ahead of time and have a few flat squares to roll and scrunch together.

**Adult Supervision is required at all times.**

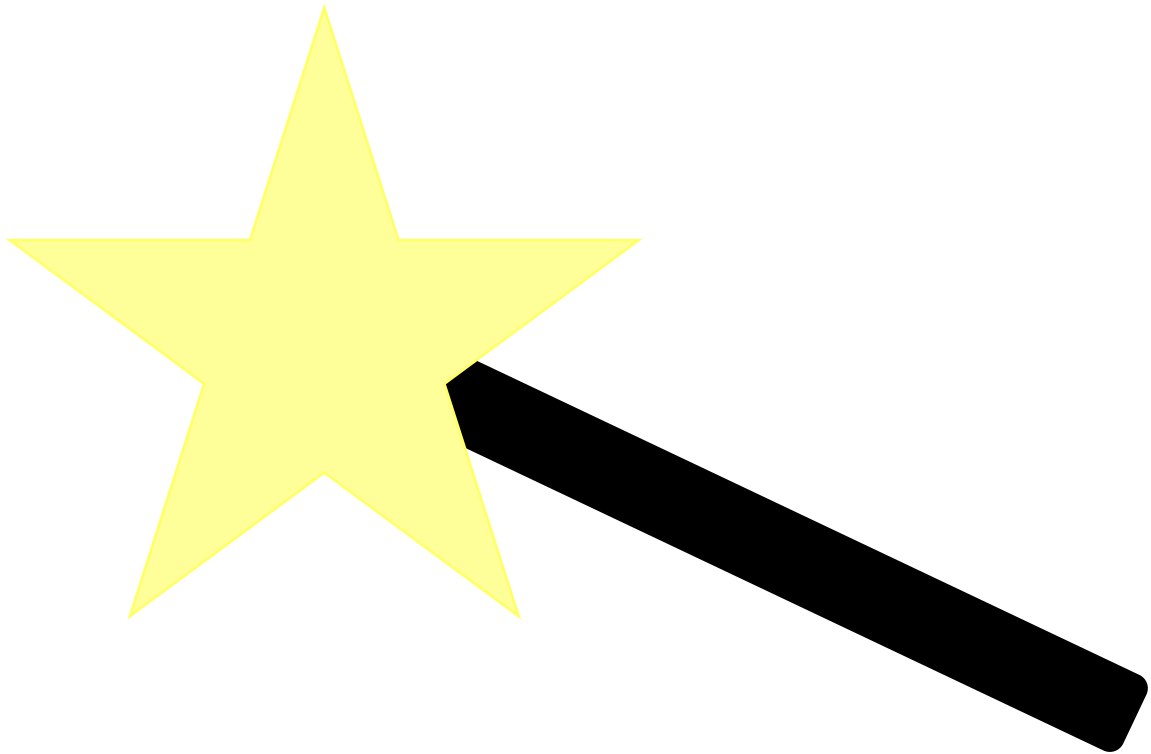


Print on paper and cover with crepe paper balls to create your very own monster artwork.



# Halloween Time #3

## Craft Idea



- You will need
- Paddlepop Sticks
  - Star Templates (see below)
  - Paper/cardstock
  - Eco Glitter or sequins
    - Glue
  - Clear cello
  - Drying space

### METHOD

1. Cut out star templates – outside and inside so that the inside of star is empty
2. Place glue on the coloured part of the star and sprinkle on eco glitter and/or sequins. Let it dry.
3. Place a small square of clear cello between two of the star templates (outer coloured star side facing out on both sides).
4. Secure star to a paddlepop stick, making a star wand.
5. Refer to the investigation question – How can I explore Halloween through PLAY?

**Adult Supervision is required at all times.**



Print on paper/cardstock and cut around the yellow edges.  
Fill the empty space with clear cello.



# Halloween Time #4

## Sensory Book PLAY Idea

Book suggestion from Lucy at [Lovefourreading](#)

You will need:

- Play Tray (I like the Kmart drinks tray)
- Coloured rice (DIY or store bought)
- Containers for pouring and scooping
  - Cupcake trays
- OPTIONAL – read and add a themed book eg Leila the perfect witch (recommended by [Lovefourreading](#))

### METHOD

1. Pour coloured rice into the play tray (either colour sorted so it can be mixed during play or mixed to start with).

Orange and purple make a great colour combination, and sometimes with flecks of black rice in the mix.

2. Place scooping and pouring containers into the play tray (recommend two to begin with and extras within reach).
3. Place the book and cupcake tray within reach.
4. Enjoy and take photos to hang up in the Potion Shop.
5. Refer to the investigation question – How can I explore Halloween through PLAY.

**Adult Supervision is required at all times.**



# Halloween Time Investigative Question

*project play pack - toddlers and preschoolers*

How can I explore Halloween through PLAY?

Write and/or draw how you explored Halloween through PLAY?



# Weekly PLAY Planner



Monday	Tuesday	Wednesday	Thursday	Friday	Saturday	Sunday
Morning	Morning	Morning	Morning	Morning	Morning	Morning
Afternoon	Afternoon	Afternoon	Afternoon	Afternoon	Afternoon	Afternoon
Evening	Evening	Evening	Evening	Evening	Evening	Evening

Plan ahead and schedule block in Vehicle PLAY this month.

# Halloween Time

thank you to the following artists

Graphics and Fonts used: Whimsy Clips, *pb skinnymocha*, KG Blank Space Sketch and JR Skinny Pete



*erin xx*

**All PLAY activities shared by celebratePLAY & Project PLAY require adult supervision at all times.**